

# HOLIDAY HOME DESTINATION

**AT THE FOOT OF NANDI HILLS, 40MINS FROM BLR CITY**



## Why Invest in Canterbury Hillview

---

1. With more than 2 decades of experience Canterbury Hillview is continuing in the same trajectory as Canterbury Castles
2. Within 50 kms from the CBD
3. RERA Approved.  
PRM/KA/RERA/1250/301/PR/211204/00457
4. 100% Clear title property
5. Great ROI with Capital Gains
6. Located on the State highway with access to Dodaballapur and Nandi Hills
7. Passive Rental Income
8. Holiday Home Management
9. North Bangalore is the emerging IT sector

What you get when you

# invest with us?

**LIFETIME CLUBHOUSE MEMBERSHIP**

in Canterbury Castles

All Holiday homes will be

**MANAGED BY TRIPVILLAS**

Your Home generates

**RENTAL INCOME**

**YOU GET TO USE YOUR HOME**

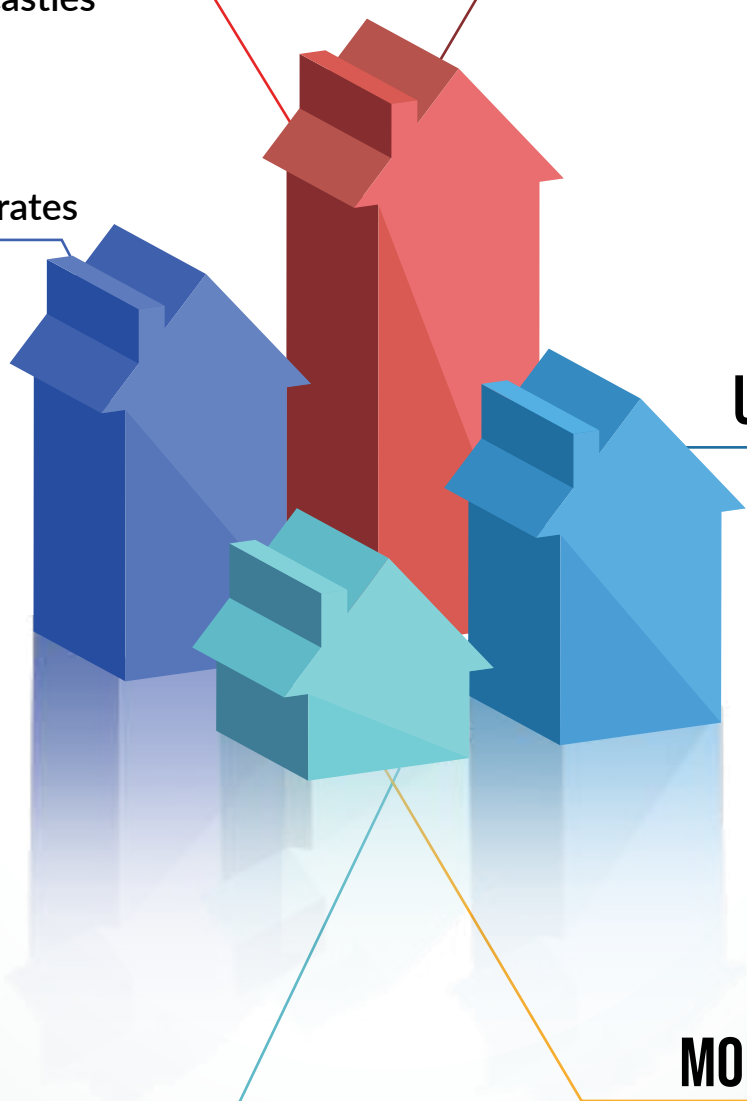
whenever you plan

**YOU CAN PICK BETWEEN A 1BHK OR 3BHK HOME**

according to your need

**HASSLE FREE MONTHLY INCOME**

to service your loan for a period of 3 years



# ARCHITECTURAL

## View of Layout

---



# PLOT PRICING

---

Plots starting  
@ 30 Lakh for  
1200 sqft  
(All-inclusive)

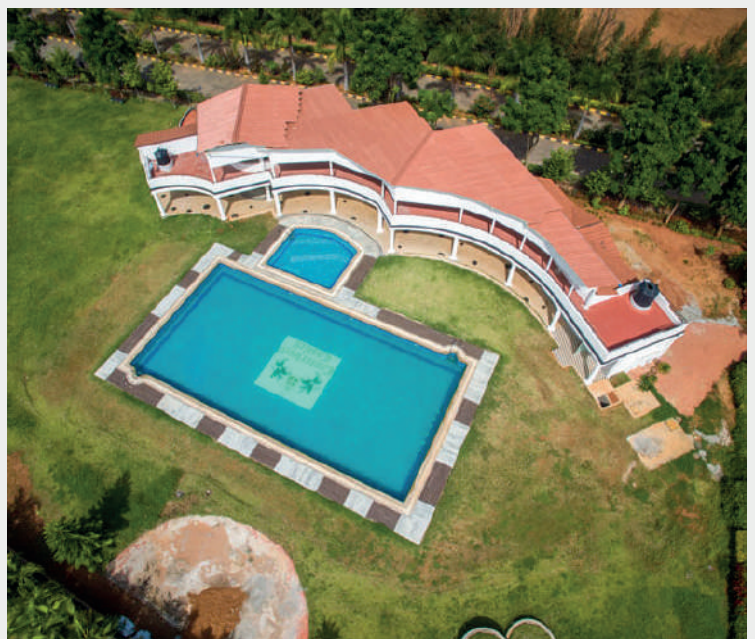
➤ SCOPE FOR INR 30,00,000/-

➤ 1200 Sft plot

➤ Lifetime Canterbury Castles'  
Club house membership

➤ 3 Years Maintenance  
at INR 6/Sqft. for Canterbury  
Hillview gated community

➤ 3 Years Service charges to  
Canterbury Club house



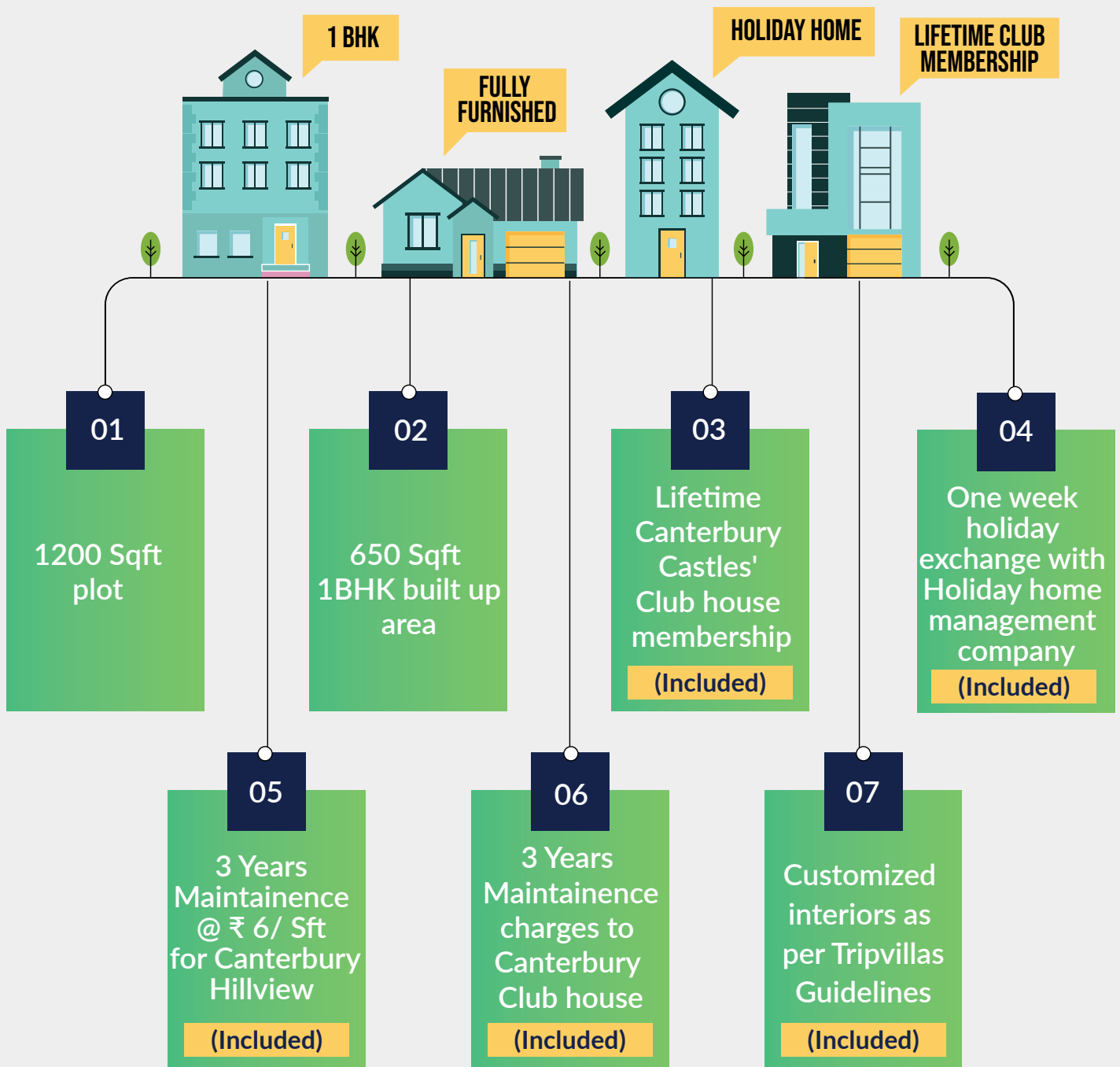
# 1 BHK Holiday Home @ 50 Lacs



Includes:

Guaranteed Rental Income for  
3 years INR 23,333/Per Month  
from date of handover

[www.tripvillas.com](http://www.tripvillas.com)



Buyers Scope: Registration Charges & GST

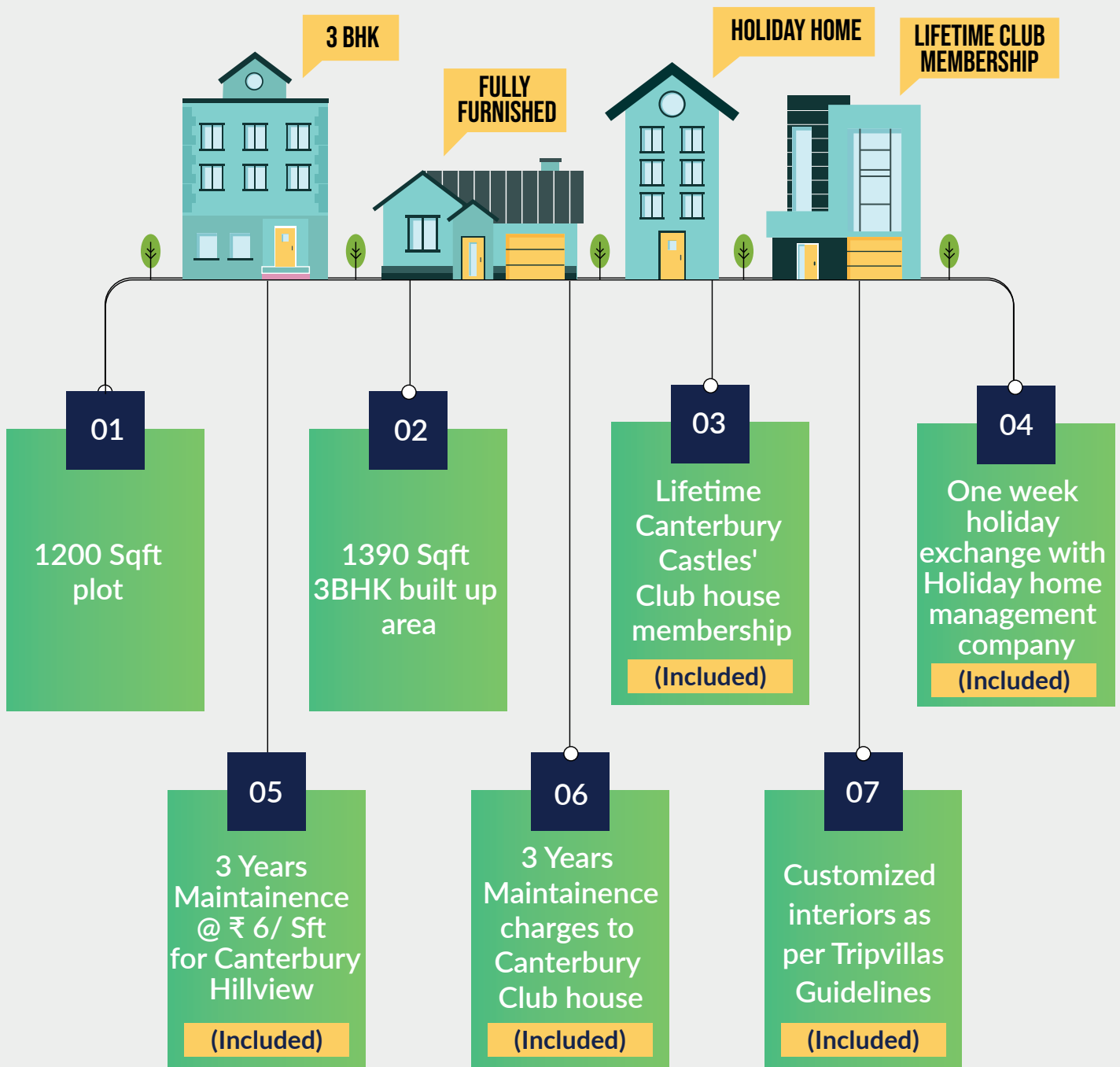
# 3 BHK Holiday Home @ 75 Lacs



Includes:

Guaranteed Rental Income for  
3 years INR 40,000/Per Month  
from date of handover

[www.tripvillas.com](http://www.tripvillas.com)



Buyers Scope: Registration Charges & GST

# AMENITIES

---

**GATED COMMUNITY**

**WATER, ELECTRICITY,  
DRAINAGE AND ROADS**

**24/7 SECURITY**

**PARKS, WALKWAYS  
AND JOGGING PATHS**

**SWIMMING POOL**

**CLUBHOUSE**

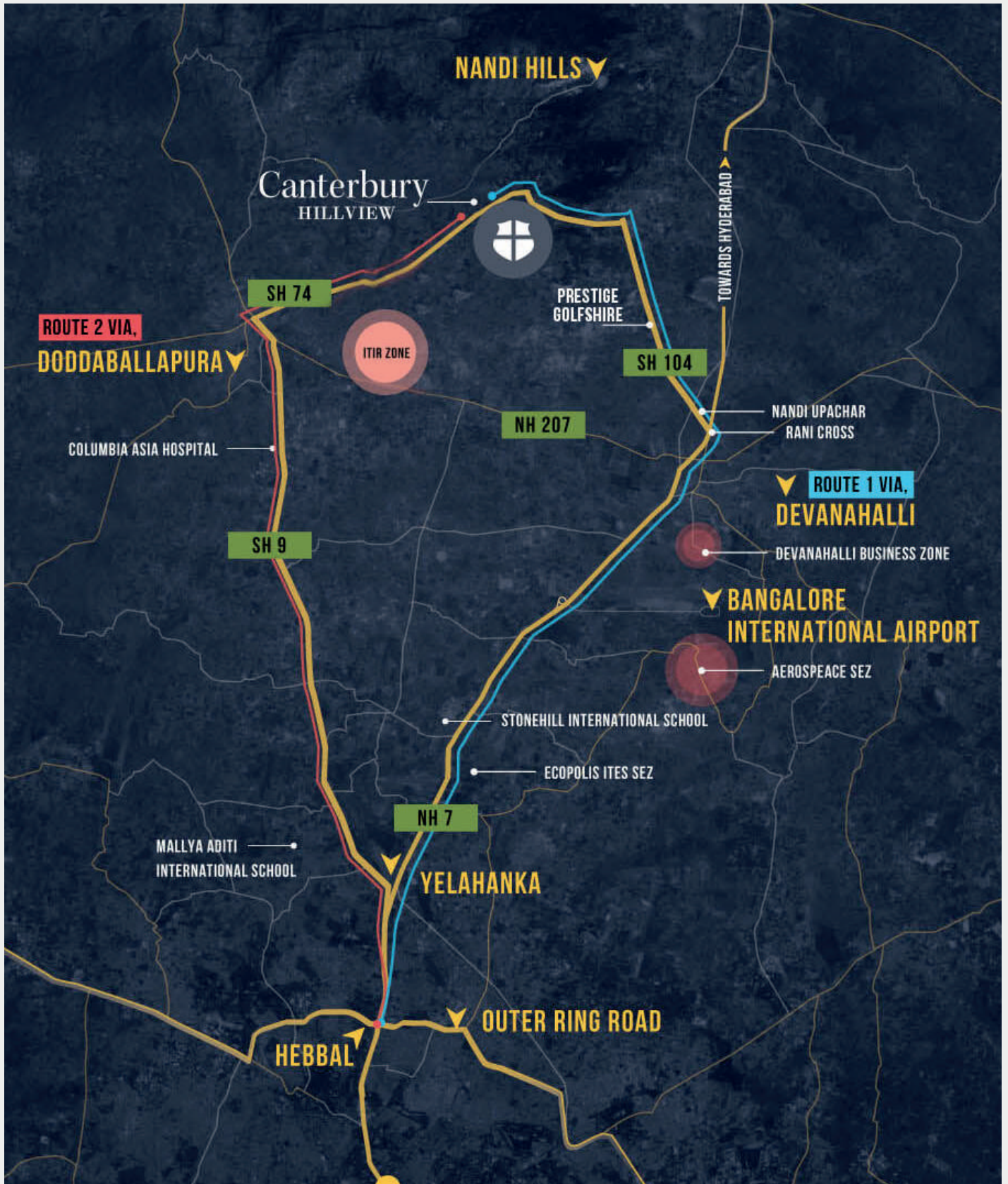
**BANQUET HALL**

**RESTAURANT**

**OUTDOOR EVENTS  
ARENA**



# ROUTE MAP



# CONTACT US

---



*We believe the success of a real estate development is not measured by the number of units sold, but by the community that comes together to make it their home.*



**Natalie Quadros**

Ph: +91 82969 69731

[natalie@canterbury.life](mailto:natalie@canterbury.life)



**Leslie Quadros**

Ph: +91 99456 94979

[leslie@canterbury.life](mailto:leslie@canterbury.life)